

Zebron® GC Columns



If Zebron columns do not provide you with equivalent or better separations as compared to any other GC column of the same phase and comparable dimensions, return the column with comparative data within 45 days for a FULL REFUND.

ZB-1ms

- Very low bleed (MS Certified) phase especially suited to high sensitivity GC/MS
- Extremely inert for active compounds such as drugs, pesticides, or acids and bases
- Improved signal-to-noise ratio for better sensitivity and mass spectral integrity
- Identical selectivity to the ZB-1
- Equivalent to USP Phase G2
- Temperature Limits: -60 to 360/370 °C (Isothermal/TPGC)

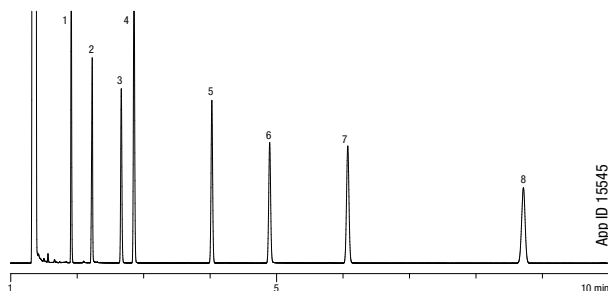
Alternative to Any MS-Certified 100% Dimethylpolysiloxane Phase:

- DB-1ms
- HP-1ms
- AT-1ms
- MDN-1
- Rtx-1MS
- VF-1ms
- SolGel-1ms
- Equity-1
- CP-Sil 5 CB ms

Lower Overall Column Activity

Activity is a key measure of column quality. Zebron ZB-1ms columns are aggressively tested to ensure full deactivation. Below is an example of the aggressive QC test mix we use, notice the low tailing for even the most active compounds like 2-Ethylhexanoic Acid!

Test Conditions for Zebron ZB-1ms



- Column:** Zebron ZB-1ms
Dimensions: 30 meter x 0.25 mm x 0.25 µm
Part No.: 7HG-G011-11
Injection: Split Flow 100 mL/min @ 250 °C, 1.0 µL
Carrier Gas: Hydrogen @ 1.18 mL/min (constant flow)
Oven Program: 140 °C (Isothermal)
Detector: FID @ 325 °C
Sample:
1. Decane
 2. 2-Ethylhexanoic Acid
 3. 4-Chlorophenol
 4. Naphthalene
 5. Tridecane
 6. 1-Undecanol
 7. Dicyclohexylamine
 8. Pentadecane

Column Profile



Applications

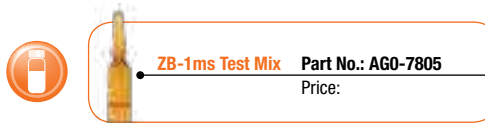
- Amines
- Acids
- Diesel Fuel
- Polychlorinated Biphenyls (EPA Method 1668)
- Drugs of abuse
- Flavors & Fragrances
- Pesticides

Ordering Information

Zebron ZB-1ms GC Columns

| ID(mm) | df(µm) | Temp. Limits °C | Part No. | Price |
|-----------------|--------|-----------------|-------------|-------|
| 10-Meter | | | | |
| 0.10 | 0.10 | -60 to 360/370 | 7CB-G011-02 | |
| 0.18 | 0.18 | -60 to 360/370 | 7CD-G011-08 | |
| 12-Meter | | | | |
| 0.20 | 0.33 | -60 to 360/370 | 7DE-G011-14 | |
| 15-Meter | | | | |
| 0.25 | 0.25 | -60 to 360/370 | 7EG-G011-11 | |
| 0.32 | 0.25 | -60 to 360/370 | 7EM-G011-11 | |
| 20-Meter | | | | |
| 0.18 | 0.18 | -60 to 360/370 | 7FD-G011-08 | |
| 0.18 | 1.00 | -60 to 360/370 | 7FD-G011-22 | |
| 25-Meter | | | | |
| 0.20 | 0.33 | -60 to 360/370 | 7GE-G011-14 | |
| 30-Meter | | | | |
| 0.25 | 0.10 | -60 to 360/370 | 7HG-G011-02 | |
| 0.25 | 0.25 | -60 to 360/370 | 7HG-G011-11 | |
| 0.25 | 0.50 | -60 to 360/370 | 7HG-G011-17 | |
| 0.25 | 1.00 | -60 to 360/370 | 7HG-G011-22 | |
| 0.32 | 0.25 | -60 to 360/370 | 7HM-G011-11 | |
| 0.32 | 1.00 | -60 to 360/370 | 7HM-G011-22 | |
| 0.53 | 1.00 | -60 to 360/370 | 7HK-G011-22 | |
| 60-Meter | | | | |
| 0.25 | 0.25 | -60 to 360/370 | 7KG-G011-11 | |
| 0.25 | 1.00 | -60 to 360/370 | 7KG-G011-22 | |
| 0.32 | 1.00 | -60 to 360/370 | 7KM-G011-22 | |

Note: If you need a 5 in. cage, simply add a (-B) after the part number, e.g., 7HG-G011-11-B. Some exceptions may apply. Agilent 6850 and some SRI and process GC systems use only 5 in. cages. See p. 91



Contact Phenomenex or your local Phenomenex distributor for additional GC products and applications.

Extend column lifetime. Add a Z-guard to your next Zebron GC order.